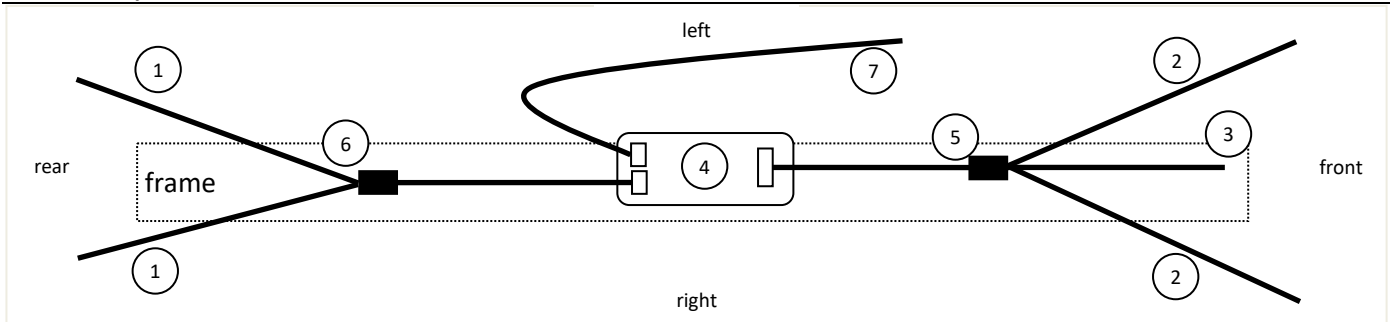


velorian BLINKERSET Anthrotech Classic



Installation

Schematic representation



- | | |
|--|---|
| <ol style="list-style-type: none"> 1. LED Mini turn signal with rubber cap on bracket BHW 1 2. LED Mini turn signal with rubber cap on bracket BHW 1 3. Daytona Double Push Button 4. Blinkerbox | <ol style="list-style-type: none"> 5. Splitter with 2 x 2-pole connection to the turn signals and 1 x 3-pole connection to the switch. 6. Rear splitter with 2 x 2-pole connection to the turn signals 7. 2-core power supply cable. |
|--|---|

Turn signal mounting front



To mount the turn signals, the mudguards are removed and the mounting brackets for the turn signals are attached to the upper mounting screws. For mounting, the (smaller) M6 hole of the angle is provided.

The angles are aligned inwards. See Fig. 1

The turn signals can now be inserted through the M8 hole of the bracket and reattached with the nut previously unscrewed from the turn signal. Finally, the rubber cap is pushed over the cable and the nut.

Fig. 1

The cable with the red marking is for the connection of the respective right turn signal in the direction of travel, as long as the double pushbutton is mounted in the manner described below.

Switch assembly

The double pushbutton is mounted above the handle as shown in Fig. 2. The cable on the switch can then be routed below the rubber grip to the 3-pin plug on the splitter



Fig. 2

Only in this position (the outer sides of the pushbuttons point downwards) does the right pushbutton trigger a flashing on the right side in the direction of travel.

If the switch has to be mounted rotated by 180°, the connections of the left and right turn signals must be changed accordingly.



Fig. 3

Blinkerbox



Fig. 4

The cable with the red marking is for the connection of the respective right turn signal in the direction of travel, as long as the double pushbutton is mounted in the described manner.

The intended mounting location for the turn signal box is between the frame hinge and the rear swing arm. There it should first be attached provisionally.

The front cable splitter is placed at the height of the handlebar center on the left side of the frame.

From there, the cables with the round plugs are laid to the intended positions of the turn signals on the mudguards.

The turn signals and the switch can now be connected.

Connection of the power supply and first function test

Once the front indicators and switches have been connected to the indicator box, an initial function test can be carried out.

The battery supplied can now be attached to the bar behind the seat using the Velcro tape. The 2-core connection cable of the indicator box is then connected directly to the battery connection using the round plug.

The turn signals will flash very quickly at this time due to the lack of rear turn signals. This is in accordance with the StVZO requirement that one turn signal should indicate the failure of the other turn signal on the same side by flashing faster.

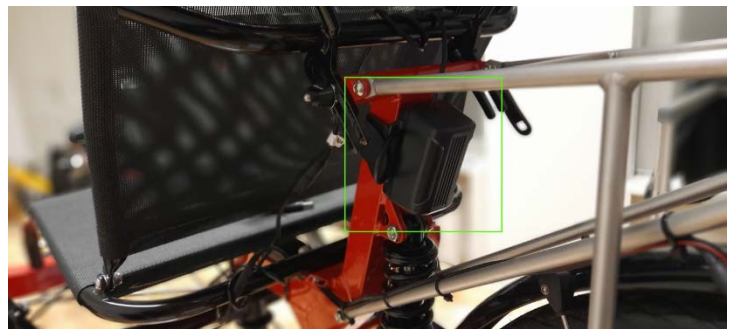


Fig. 5

Mounting the rear turn signals



Fig. 6

When the function is tested again, the turn signals should now flash in the normal rhythm.

First, the turn signal brackets for the rear turn signals should be mounted. The picture shows an example of mounting on the luggage rack.

Now the cables can be led from the turn signal box to the mounting position of the rear turn signals, and connected to the turn signals there.

The cable with the red marking is for connecting the right turn signal in the direction of travel.

Mounting termination

To complete the assembly, the position of the switches and turn signals should be checked and all screw connections should be tightened.

Likewise, the course of the cables should be checked so that no cable can be crushed when folding the wheel or by movements of the swingarms.

Now all cables should be fixed in their final position with the supplied cable ties.

Function and operating instructions

The function complies with the requirements of the StVZO (Germany) and UN ECE 50.

Operation with indicator switch (toggle switch)

When the toggle switch is mounted on an appropriately configured blinkerbox triggers flipping the toggle switch to the left the turn signals to flash on the left side. When the switch is returned to its original position the flashing stops.

Flipping the toggle switch to the right causes the indicators on the right to flash.

If the switch is not returned to the home position, **the flashing stops automatically after 4 minutes**. Returning the toggle switch to its original position and switching it on again will restart the flashing.

Triggering the hazard warning lights is not possible with the toggle switch.

Operation with buttons

When the push-buttons are mounted on an appropriately configured blinkerbox triggers a short press on the left push-button flashing of the turn signals on the left side. If the left button is pressed again, the left turn signals stop flashing. Pressing the button on the right side causes the indicators on the right side to flash. If the right button is pressed again, the flashing stops. Switching the flashing from e.g. left to right can be achieved by pressing the other button in each case.

If the indicators are not switched off manually, **the flashing stops automatically after 4 minutes**.

The hazard warning lights are triggered by switching on the other side. Pressing and holding one button and pressing the other button starts the warning flashing. It can be stopped again by pressing one of the buttons.

The warning flashing stops automatically after 30 minutes.

Warning function in case of failure of one of the turn signals (only with configuration for 4 turn signals)

If, for example, one of the rear turn signals fails:

- The front indicator flashes twice as fast. If the front indicator fails, the rear indicator flashes twice as fast.
- The separate status LED (if installed) flashes twice as fast.
- The sound generator in the flasher unit (if active) ticks twice as fast.

Configuration of the Blinkerbox

The indicator box can be configured for different operating modes. The push-buttons or a corresponding device and a connection to the power supply are necessary for configuration.

The configuration mode is set as follows: Keep one button permanently pressed and press the other button eight times in succession. Then release both buttons. A short tone sequence sounds. Now the indicator box is in configuration mode and the software version can be set. The following is an overview of which button presses determine which setting:

1st button press:	number of installed turn signals	left button = 2 turn signals	right button = 4 turn signals
2nd keystroke:	button or switch operation	left button = push button	right button = switch
3rd button press:	indicator sound on or off	left button = indicator sound off	right button = sound on

This results in the following key combinations to select the software versions in configuration mode:

L designates the left button, R the right button:

2 indicators switch with sound	LRR	4 indicators switch with sound	RRR
2 indicators button with sound	LLR	4 indicators button with sound	RLR
2 indicators switch without sound	LRL	4 indicators switch without sound	RRL
2 indicators button without sound	LLL	4 indicators button without sound	RLR

After entering the key combination, the configuration is completed and another short tone sequence sounds. If no switch is pressed is made, the configuration mode is automatically exited after approx. 2 minutes. The configuration is retained even after disconnection from the power supply.

Subject to technical changes.

velorian

EU - Konformitätserklärung EU - Declaration of conformity



velorian e-bike blinkerbox alpha22

Wir, die velorian GmbH,
We, velorian GmbH,

velorian GmbH
Storkower Str. 115a
10407 Berlin
Germany

erklären, dass vorstehend bezeichnete Geräte in Konzeption und Bauart sowie in der von uns in Verkehr gebrachten Ausführung den Anforderungen der zutreffenden, unten aufgeführten Richtlinien entsprechen.

hereby declare that the design and construction of the above-mentioned products and the version placed on the market by us comply with the requirements of the applicable directives listed below.

EN 55016-2-1; 2014-12

EN 55016-2-2; 2011-09

EN 15194 11:2018

ISO 11451-1; 2015

ISO 11451-2; 2015

Berlin, 01.08.2022

A handwritten signature in black ink, appearing to read 'Eckehard Bahr'.

Eckehard Bahr
velorian GmbH
Business Director/CEO